

ELLIS IMPACT



Ellis
MEDICINE



The Future of Healthcare is Bright

When we look at this issue's cover photo, we can feel the excitement, pride and joy of the Belanger School of Nursing Class of 2022. This photo captures the future of healthcare, and it is bright, passionate and promising.

In the following pages, you will see how philanthropy impacts every part of Ellis by helping to establish new programs, purchase new technology and equipment, and upgrade our facilities. Most importantly, you will see how philanthropy impacts people, both the patients who turn to Ellis for care, their families who need support, and Ellis employees, who are grateful for philanthropy to further their education and develop their clinical skills.

Today, one of healthcare's greatest challenges is recruiting and retaining employees. The Ellis team is thinking outside the box to attract talented clinicians and to grow a skilled workforce. This innovative approach will ensure that Ellis has employees vested in our community's health and are committed to the hospital's mission and values.

As you read further, you will see examples of how philanthropy is helping to educate and retain Ellis nurses, in addition to providing scholarships and graduation awards to our nursing students.

We all play a vital role in ensuring Ellis provides the best care to our community. With your continued support and partnership, the future is bright for the next generation of patients and caregivers.

Thank you for all you do for your community hospital and for supporting the people who provide care and the patients who receive it.

With Gratitude,

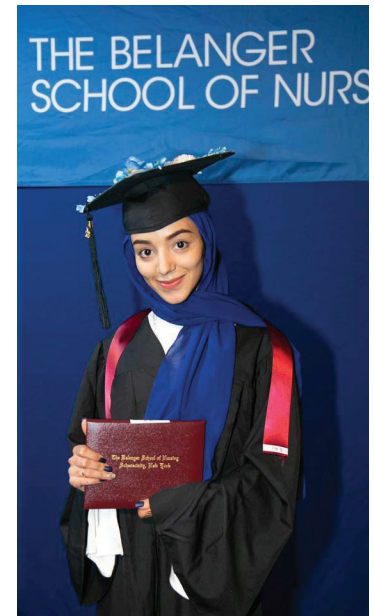


MARCIA M. STEINER
Vice President and Executive Director,
The Foundation for Ellis Medicine



JIM HURLEY
Chair, The Foundation for Ellis Medicine
Board of Trustees

2022 ELLIS BELANGER SCHOOL OF NURSING GRADUATION



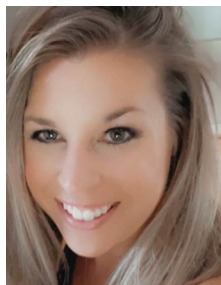
Positively Impacting Patient Care

PHILANTHROPIC INVESTMENT IN NURSING EDUCATION

Nurses are key to making a hospital great. When New York State passed the BSN in ten law in 2017, requiring all nurses to obtain a bachelor's in nursing degree within ten years of receiving their Registered Nursing (RN) license, Ellis knew this was a win for the hospital and for patients.

For many though, going back to school has its challenges: financial, family, work and lifestyle. Thankfully, our community has stepped up by investing in our nurses' professional growth and clinical skills, which, in turn, provides a multitude of benefits for both patients and the community.

In 2018, Ellis Foundation received a substantial donation from a grateful patient and other donors who appreciate the value of the nursing profession to create the Advanced Nursing Education program. This program offers Ellis nurses up to \$15,000 in tuition support to make the cost of obtaining an advanced degree less arduous.



Erika Johnston, MSN, director of Professional Practice, understands the value of a nurse's advanced education, having received this award. She enthusiastically promotes this opportunity to all nurses, as well as future nurses at the Belanger School of Nursing. Since 2018, more than 60 nurses have benefitted from this philanthropy-driven initiative.

"Statistics show that patient satisfaction and quality of care improve with more highly educated nurses. The Advanced Nursing Education program allows us to support our nurses in their career goals, which directly impacts staff retention and overall morale," Erika explains.

“Congratulations to all the graduates. Everyone needs nurses; you have always been vital to healthcare, but the need now is acute. Stewart's and the Dake family are proud to help with your education.”

SUSAN DAKE
Stewart's Shops



Kimberly Meyer, RN, BSN, manager of Quality and Risk Services, also an awardee, shares how the program made her own career advancement possible.

"The funding gave me peace of mind, knowing that I would not be financially depleted while earning my degree. It's a great program, and a real perk of being at Ellis."

It also cements and solidifies commitment and aids in recruiting and retaining a skilled nursing staff.

"I feel invested in this community. Ellis is home for me. Programs like this foster great relationships," added Kim.



Martha Weiskotten, RN, BSN and surgical clinical reviewer, echoes the same sentiment about her experience with donor-supported funding for nurses and its impact on her life.

"The nursing award takes the pressure off. Having options for advancing your career and gaining new skills without financial hardship secured my intent and commitment to work at Ellis," says Martha.

"Earning my degrees helped round out my practice and allowed me to understand treatments, patients and hospital operations on a more sophisticated level. I gained leadership skills and confidence. When I work with students or younger nurses, I am always talking up Ellis and encouraging this program," added Martha.

Because of donor support, future generations of nurses will continue to advance their careers, gaining advanced skills and bringing those skills directly to Ellis patients.

The Advanced Nursing Education program is philanthropy in action - helping address a critical need to attract, grow and retain the best clinical teams to care for our community.

It's an investment in our own workforce, and in our commitment to excellence in healthcare.

“Supporting the nurses at Ellis goes hand in hand with supporting our community. We all want our families to receive the best care when they are in the hospital. This gift of education is so much more than tuition assistance—it helps a professional develop their skills, provide for their family and will help save lives.”

STEVE PAGANO
Ellis Medicine Board of Trustees and Benefactor



PHILANTHROPY IN ACTION

REPORT ON GIVING 2021

The impact of your philanthropy is providing our community with the best care, close to home. Last year, donations were used to purchase new equipment, support lifesaving services for our patients, and provide employees with opportunities to grow their clinical skills. The following highlights some of what we were able to accomplish with your support.



Investments in new technology to monitor, diagnose and treat patients including:

- Cardiac Catheterization (Cath) lab equipment updates and space renovations allow for new, cutting-edge procedures that help prevent and treat heart attacks
- 100% of the construction and equipment cost for the new Medical Oncology, A Roswell Park Care Network Site
- A new Linear Accelerator to deliver precise radiation therapy to cancer patients
- Updated heart defibrillators at Bellevue Woman's Center
- Purchasing six new probes used in biopsy procedures to help detect cancer earlier and provide a more accurate diagnosis.



Paul Milton, President and CEO of Ellis and Father Tony Green, Director of Pastoral Care and Volunteer Services, hold a dedication ceremony for the installation of a Peace Pole on the Nott Street Campus.

Support for our patients and their families:

- Purchased peace poles for Ellis' campuses as a silent visual to promote world peace and understanding
- Provided gifts and essentials for individuals receiving care in the hospital during the holidays
- Provided new books for children to take home at each well child visit to encourage reading and readiness for school
- Provided I-Pads for patients to connect with their loved ones while in the hospital and/or quarantined
- Built a satellite pharmacy on the Medical Oncology site to provide better and more coordinated care for cancer patients
- Provided charity care to vulnerable members of the community





Support for the care teams and employees at Ellis including:

- Lunch and learn sessions for the Radiation Oncology Team
- Scholarships and graduation awards to Belanger School of Nursing students
- Covered the cost of tuition for nurses to earn their advanced nursing degrees
- Veterinary care and supplies for Cargo, the hospital's canine security officer
- Funding for fetal monitoring training for nurses
- Retreats and conferences for the Pastoral Care team who persevered during the pandemic
- Financial support for co-workers experiencing a crisis (this is 100% funded through employee donations)



Purchases and improvements for Mental Health services:

- Underwrote the salaries for The Living Room: a crisis diversion mental health program at the State Street Health Center
- Provided sensory and play therapy equipment, furnishings, SMART boards and artwork for the new outpatient clinic
- Provided materials for therapeutic journaling
- Purchased new rocking chairs for the inpatient psychiatric care units
- Invested in foam core artistic doors to support a ligature free environment on the inpatient psychiatric units



donor
spotlight

Cris Cioffi, Esq.
*Ellis Medicine Trustee,
Friend and Donor*



**Cris with her father,
Lawrence Cioffi MD,**
after the birth of her
daughter.

YOU
ARE MAKING
A DIFFERENCE

Leaving a Legacy

A SPECIAL GIFT TO HONOR A FAMILY'S MULTI-GENERATIONAL SUPPORT OF ELLIS

When individuals make special gifts to Ellis, there is often a meaningful story behind their generosity. For Cristine (Cris) Cioffi, a proud, multi-generational family legacy stands at the center of her commitment to Ellis and her wish to contribute to its successful future.

Cris is a long practicing and much-awarded attorney who founded the firm Cioffi Slezak Wildgrube, PC in 1995. But before her own prestigious career, she was the adoring daughter of Dr. Lawrence A. Cioffi, a celebrated obstetrician and gynecologist who worked his entire career at Ellis Hospital. Some of Cris' happiest childhood memories are of dinners in the hospital cafeteria with her father, whose dedication kept him with his patients for long hours.

"I would hear the click of his wingtip shoes on the hospital floors before I could see him," she recounts. "Now when I walk through Ellis, I can feel him with me, still."

Cris was also one of the founding members of Ellis Hospital Foundation, setting the groundwork for all that has been accomplished since. She serves as a Trustee on the Board of Ellis Medicine—and this is not her first term—and is proud that her daughter-in-law, Lauren Sharkey, Esq., now sits on the Foundation Board, sharing her commitment to the organization and the community. Her son, Patrick, is an interventional radiology nurse at Ellis and a graduate of the Belanger School of Nursing, adding yet another generation to the Cioffi legacy.



Cris celebrating with her children and grandchildren

As Cris began to plan for her retirement, she knew she wanted to make a special gift to Ellis, to honor her father and to continue her personal commitment to our community hospital. She chose to gift a life insurance policy,

making Ellis the owner and beneficiary upon her death. The policy's value will continue to grow and benefit future generations of Ellis patients. Her life insurance policy is the gift of a promising future.

"My vision and hope for Ellis is simply that it will always be here," Cris says. "I live in this community. In my own times of need, I don't want to have to go to Albany. I want to be treated here by the talented physicians, nurses, and techs who make Ellis great, and many of whom are friends. We have to make sure that Ellis is strong and that it lasts."

The Foundation is grateful and inspired by Cris and for the many ways she has supported Ellis Medicine over the years, and her commitment to our mission.

Pioneering Women's Care for Our Community

REMEMBERING DR. GRACE JORGENSEN WESTNEY

FOUNDER AND PRESIDENT, BELLEVUE WOMAN'S HOSPITAL



Ellis Medicine mourns the passing of Dr. Grace Jorgensen Westney: a pioneer, legend, innovator, and physician.

We all know someone who has a tie to Bellevue Woman's Center. Either they were born there, received outstanding care or knew someone who delivered at Bellevue. The Niskayuna woman's hospital was founded on the principles instilled by Grace's mother, M. Grace Jorgensen, RN, who after giving birth at home, was determined to create a hospital to provide women with exceptional and safe care during delivery. That vision and mission remain strong today.

Grace followed her mother's lead and blazed a bolder journey for herself and all women.

Upon graduating from New York Medical College—one of only two women in her class—Dr. Jorgensen set about improving and expanding health care for women at Bellevue Woman's Hospital. Her passion and commitment were matched only by that of her husband, Dr. Howard Jay Westney.

Under Grace's 40 years of leadership, Bellevue Woman's Hospital set new standards in care. Whether it was searching out experts, such as Dr. Virginia Apgar, to show local doctors that safe and effective pain relief during

childbirth was possible (now commonly known as the epidural), and doing mammography before the Komen Foundation even began, Dr. Jorgensen changed our region and made us stronger, all while raising the bar in women's health care.

A compassionate and dedicated physician, Dr. Jorgensen was known for supporting and inspiring her team, all while caring for her patients, delivering thousands of babies, and raising her own family.

We are grateful for Dr. Jorgensen's vision, dedication and compassion for laying the strong foundation of women's health care today. Her pioneering spirit will live on.

Honoring Dr. Hee-Joo Cheon-Schingo at Women's Day Out

PRESIDENT, CARENET MEDICAL GROUP

As president of the area's leading medical practice devoted to women, we are proud to honor Dr. Hee-Joo Cheon-Schingo as this year's recipient of the Jane Golub Leadership in Women's Health Award, affectionately known as The Janey.

Well respected and revered by her peers and patients, Dr. Cheon-Schingo is a board-certified ob/gyn and leads CareNet, an all-female practice providing obstetrical and gynecological services to women from New York, Massachusetts and Vermont.

Hee-Joo says that she knew since the time she was three that she wanted to be an ob/gyn doctor. It is what her family does. Hee-Joo's father, Dr. Hong Kyu Cheon, founded the practice, her sister Dr. Elaine Cheon-Lee is a partner, and her younger sister is an ob/gyn in New York City.

Women's Day Out on Sept. 22 is a twist on a favorite event and will be a luncheon at Rivers Casino & Resort. The event includes an educational panel, auction, wine pull and more. Funds raised will support the purchase of a new 3D Tomography for Ellis' Bellevue Woman's Center.

FOR EVENT INFORMATION VISIT ELLISMEDICINE.ORG OR CALL 518.243.4600.



Women's
DAY OUT

SEPTEMBER 22, 2022

ELLIS IMPACT

SUMMER 2022 | ellismedicine.org | 8

2022 EVENTS SAVE THE DATES:

September 22, 2022
Women's DAY Out
 Rivers Casino and Landing Hotel

Thanksgiving—November 24, 2022
Cardiac Classic—
5K, Wellness Walk, Fun Run
 Central Park, Schenectady

Ellis Foundation Elects New Leadership

At the June 2022 Annual Meeting, a new group of dedicated leaders took the helm of the Foundation to steer efforts to support the mission of Ellis. We are pleased to announce the 2022-2023 executive committee members. The group of leaders is dedicated to the mission of Ellis Medicine and the Foundation.



Jim Hurley, Chair—
 An entrepreneur and franchise owner of Home Instead, a company dedicated to supporting families with home health aide services. Jim has served on the Board for six years holding various officer positions.



James Barnes, Esq.,
 Vice Chair—A partner with Burke & Casserly PC, specializing in estate planning. James has served on the Foundation Board since 2016, most recently as treasurer.



Christian Soller, Esq.,
 Treasurer—An attorney and Managing partner at Hodgson Russ, LLP, specializing in serving clients ranging from Fortune 500 and 1000 companies to small businesses and individuals, who serve a wide range of industries. Christian brings a wealth of financial expertise to the Board.



Lauren Sharkey, Esq.,
 Secretary—A partner with Cioffi Slezak Wildgrube, PC, Lauren specializes in estate planning and real estate law. Lauren has served on the Foundation Board since 2017.



Welcome Stephanie Mumford, CPA

Stephanie is the newest member of the Foundation Board of Trustees, elected at the June 2022 Annual Meeting. Stephanie is a shareholder with Teal, Becker, Chiaramonte and brings expertise in non-profit finance and audit procedures. Stephanie and her family reside in Clifton Park.