

# ELLIS INSIGHT

Ellis  
MEDICINE



Paul Milton, President & CEO

## Ellis Medicine UPDATE

FROM PAUL MILTON

The summer season has brought with it a sense of hope as vaccinations and safety measures have stabilized the number of COVID-19 positive patients both at Ellis and in our community. As the Ellis team tackled the pandemic, we also kept our eyes on the future. Now is the time for growth, partnership and strengthening our position as a strong regional community hospital.

During 2020, Ellis established new partnerships and launched new initiatives to strengthen care for our patients and community. These collaborations ushered in a new era of excellence for Ellis, expanding and enhancing our ability to address our community's healthcare needs today and for future generations.

As a friend of Ellis, I want to update you on this exciting future.

- Ellis' partnership with Roswell Park Comprehensive Cancer Center is moving forward rapidly. Even before the ribbon is cut on the new facility, Roswell and Ellis are working together to provide the best care for our patients. Dr. Thomas Schwaab of Roswell Park is assembling an outstanding oncology

team; each member meeting rigorous Roswell standards and qualifications. Construction is well underway and we look forward to welcoming patients later this summer. Our community has voiced their overwhelming approval of the new Ellis Medicine Oncology Center, a member of the Roswell Park Cancer Network. Your generous philanthropic support has made this possible.

- Ellis and St. Peter's Health Partners continue to work diligently toward bringing the two organizations together: A definitive agreement and merger is still the end goal. This process is, however, long and complicated with many steps and approvals along the way. As part of the planning stage, we are exploring more immediate opportunities to collaborate on special projects with St. Peter's to strengthen healthcare in our community.
- Ellis and Hometown Health have worked together to continue the mission of providing dental care to those in our community. Hometown Health has a highly regarded dental practice that cares for thousands of patients each year. Beginning in July, Ellis patients will continue to receive quality and compassionate care from the skilled and caring Hometown Health team.



An interactive sensory mural located in the new waiting room of the Child and Adolescent Outpatient Mental Health Clinic.

Our partnership with you is also vital. Philanthropy helps Ellis purchase new equipment, renovate our buildings, grow our services and educate our team. Ellis' new Child and Adolescent Outpatient Mental Health Clinic is a perfect example of philanthropy at work. Staff, donors and others were on hand to celebrate the clinic's grand opening in June. Located at our State Street Health Center, the new, expanded clinic fulfills our vision of housing all outpatient mental health services under one roof and doubles our capacity and reduces, and hopefully, eliminates wait times for treatment.



Chris Spraragen and the team from Schenectady Hardware and Electric were key partners and supporters in the State Street Health Center projects.

The outpouring of support from the community for these projects and others is incredible, and I'm proud to say that both the mental health clinic and the new medical oncology renovations are funded completely through philanthropy. **Thank you for supporting Ellis and your neighbors.**

Thank you for  
being our partner  
in providing care  
to our community. With your  
support Ellis Medicine will  
always provide exceptional  
care, close to home.

YOU  
ARE MAKING  
A DIFFERENCE

## Ellis Medicine was founded on philanthropy.

The very existence of Ellis owes itself to the civic-minded generosity of its benefactor, Charles G. Ellis, who recognized the tremendous need for a community hospital in Schenectady in 1885.

While much has changed in the 136 years since the inception of Ellis, one thing remains the same. We will continue to be a strong regional community hospital thanks to **you** and the important philanthropic partnerships we have – with individuals, foundations and businesses.

The Foundation for Ellis Medicine supports the hospital's mission to meet the community's health and wellness needs with excellence.

Donations from the community over the last 15 years have supported some of Ellis' key areas of care, including the Neil and Jane Golub Center for Emergency



Marcy Steiner, Executive Director and Vice President, The Foundation for Ellis Medicine

Care, the Medical Center of Clifton Park, Bellevue Woman's Center, the Wright Heart Center, the Hinkle ICU, Medical/ Surgical Care and Primary Care. These services provide for our community's most pressing healthcare needs, and represents what constitutes a strong regional community hospital.

Over the next three years, The Foundation will focus

its fundraising efforts on enhancing mental health services, cancer treatment including medical oncology and radiation therapy, and modernizing our operating rooms to better serve our community's needs.

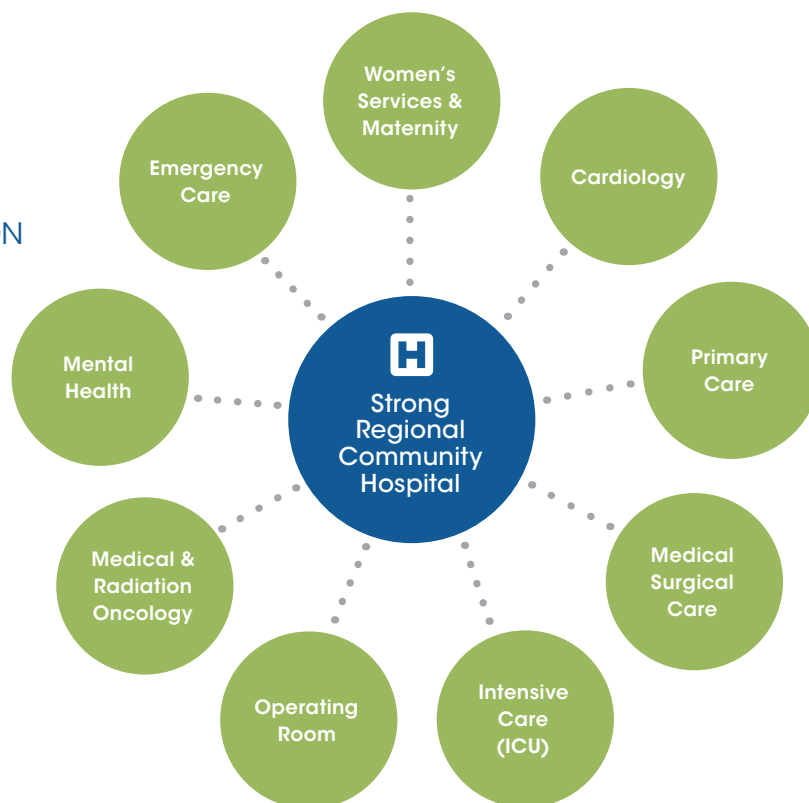
We know that growth is not possible without support from you, our most steadfast and essential partners.

Ellis Medicine will always be here to serve our community, and your support will always directly benefit Ellis, even as new partnerships and collaborations take shape.

A community hospital depends upon the vigilance, generosity, and participation of the community it serves. In this way, Ellis is fortunate beyond measure. You are an extraordinary part of our past, present, and bright future.

**We thank you for your critical support of Ellis Medicine.**

### THE FOUNDATION FOR A STRONG REGIONAL COMMUNITY HOSPITAL



### ECONOMIC IMPACT OF ELLIS MEDICINE:



MORE THAN  
**3000**  
EMPLOYEES



A TOP SOURCE OF  
PRIVATE-SECTOR  
JOBS IN THE COUNTY



ANNUALLY GENERATES  
MORE THAN  
**\$807**  
MILLION  
IN ECONOMIC  
ACTIVITY



PURCHASES  
MORE THAN  
**\$155**  
MILLION  
IN GOODS  
& SERVICES  
FROM OTHER  
BUSINESSES

donor  
spotlight

Nan and Hugh  
Murphy of Niskayuna  
are long-time  
advocates and friends  
of Ellis Medicine

YOU  
ARE MAKING  
A DIFFERENCE

Nan and Hugh Murphy are a team, and have been since their high school days in Connecticut. They came to Schenectady in 1961 at the start of Hugh's GE career and chose to remain here after his retirement in 1996. Throughout this time, they have been steadfast in their commitment to Schenectady and have worked together to support the community and those who serve it.

Nan and Hugh believe in the importance of having the highest quality of medical care available close to home and have advocated tirelessly for first-class healthcare facilities in Schenectady.

Years ago, Hugh served on the Ellis Hospital Board of Trustees and was instrumental in Ellis acquiring its first Linear Accelerator (LINAC), the machine used to treat and destroy cancer cells. Recently, Nan and Hugh had an opportunity to speak with Radiation Oncologist, Dr. Chris Dolinsky, to learn about the advancements in radiation therapy and the benefits newer technology can provide to cancer patients.

Through Nan and Hugh's contributions, investments in new technology and equipment have been made, ensuring patients have access to the highest level of medical care. Their support for the new state-of-the-art LINAC was essential and will help so many.

Radiation Oncology is a critical component of Ellis' new expanded cancer services, and the new LINAC will allow us to provide state-of-the-art care in partnership with Medical Oncology and the Roswell Park Cancer Network to treat and beat cancer.

You won't see Nan and Hugh seeking accolades for their generosity. Rather, they are humble, quietly generous, and dedicated to supporting the work of others to improve the lives of those in our community.

We are grateful to Nan and Hugh for their steadfast support of Ellis and dedication to supporting the work of others to improve the lives of those in our community.

# Welcoming ROSWELL PARK CARE NETWORK

We're changing how the Capital Region treats cancer.

Ellis  
MEDICINE

ROSWELL  
PARK  
CARE NETWORK MEMBER

MEDICAL ONCOLOGY

ONLY AT ELLIS | AUGUST 2021

[EllisMedicine.org/RoswellPark](https://EllisMedicine.org/RoswellPark)



# GRATEFUL

## FOR AN EXTRAORDINARY YEAR OF COMMUNITY SUPPORT

If one thing was made clear in 2020, it is that our community can always be counted on to go above and beyond.

Your unwavering support and historic generosity over the past 18 months demonstrates your commitment to healthcare for all in our community.

Because of your extraordinary philanthropic support, Ellis was able to address the critical needs brought about by the pandemic while continuing to strengthen healthcare for you and your family.

Over the past year, we made significant improvements to the environment of care, acquired the best, life-saving technologies, and developed strategic partnerships to ensure quality health care for generations to come.

This is the far-reaching and profound impact of your philanthropy.

We are grateful for you and every one of our donors who care for us so that we may be here to care for you and your loved ones, anytime you are in need.

“The new Linear Accelerator is up and running. Our patients are now receiving radiation therapy with extreme precision to help treat their cancer. The support from our community to help purchase this technology is incredible, and I thank you all from the bottom of my heart.”

**CHRISTOPHER DOLINSKY, MD**  
Radiation Oncology



Hybrid Operating Room in the Center for Surgical and Interventional Medicine



Fetal monitor to ensure mom and baby are safe and healthy during delivery



Ultrasound machine specific for breast tissue

### REPORT ON GIVING 2020

The impact of your philanthropy is providing our community with the best care, close to home. Last year, more than \$3 million in contributions was used to purchase new equipment, and support lifesaving services as well as our patients and care teams. The following highlights some of what we were able to accomplish with your support:

#### NEW TECHNOLOGY TO MONITOR, DIAGNOSE AND TREAT PATIENTS INCLUDING:

- Ultrasounds to capture internal body images
- An ultrasound specific for scanning breast tissue to identify abnormalities and changes
- Fetal monitors with telemetry to track the vital signs of a baby and mom's contractions
- Patient monitoring systems to track vital signs
- Minimally invasive robotic surgery equipment
- Ventilators to give critically ill patients the chance to rest and heal their lungs

New robotic surgery equipment

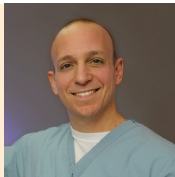


## SUPPORT FOR OUR PATIENTS AND THEIR FAMILIES INCLUDING:

- Advanced cardiac surgery and interventional radiology procedures in the Center for Surgical & Interventional Medicine
- Emergency services so our community has access to 24/7 lifesaving care close to home
- New recliners for the hospice unit, so families are comfortable during long visits with their loved ones
- Supplies for families with new babies, including infant car seats and diaper bags full of essentials
- New age-appropriate books for pediatric patients to encourage reading and early childhood development
- Tools for our diabetic patients to manage their blood sugars, insulin levels and diets
- Crisis staff to help adults who are overwhelmed and need resources

“Support from the community helps us purchase new equipment for the operating rooms, allowing surgeons to perform state-of-the-art procedures with minimally invasive tools, ultimately offering our patients a faster recovery and gets them back to enjoying life.”

**NICHOLAS MONTALTO, MD**  
Medical Director  
Surgical Services



Supplies for diabetic patients to monitor and regulate blood sugar



Golub Center for Emergency Care

## SUPPORT FOR THE CARE TEAMS AND EMPLOYEES AT ELLIS INCLUDING:

- Medical library journals and resources
- New dedicated spaces on the Ellis and Bellevue campuses called the Code Lavender Rooms, to support nurses, physicians and care teams on the inpatient units
- Meals, snacks and kind gestures, including cards and notes (see artwork to right), provided to care teams during the pandemic
- Scholarships and graduation awards to students at Ellis' Belanger School of Nursing
- Tuition support for Ellis nurses to return to school to earn their Bachelor's or Master's of Nursing degrees



(continued on next page)

“The outpouring of support has demonstrated a commitment to the needs of our community. It is both exciting and humbling to be part of such a tremendous effort to make world-class cancer care accessible in our region. This is another foundational pillar in providing comprehensive cancer care, and for that, I thank you for all of your generosity.”

**RENEE JAHN, MSN, RN,**  
**LEAN 6 SIGMA GREEN BELT**  
Director of Oncology Services



“Welcoming a baby is a life changing experience. Without the proper resources and support, this can be a very anxiety-provoking time, as families attempt to provide the basics for their babies. Thanks to community philanthropy, Bellevue is able to offer free car seats to families in need and diaper bags with diapers, wipes, and other essentials. The Bellevue team can educate families on how to care for their baby at home, and provide needed supplies. We are grateful to the generous donors who have helped and will continue to help make this possible.”

**JACKIE MONTGOMERY, MSN, RN**  
Director of Nursing, Nursing Administration  
Bellevue Woman's Center



Belanger School of Nursing students at graduation



An ice cream treat to thank the hardworking Ellis teams



- Financial support to colleagues in crisis through the employee-funded, Employee Crisis Relief fund
- Funding for continuing education for nurses, respiratory therapists and other staff
- Ministry supplies and learning retreats for the Pastoral Care team to better comfort patients and their families when spiritual support is needed

“Thank you! The support we receive means our community is behind us. It is an honor to provide compassionate care to our patients every day.”



**LESLYN E. WILLIAMSON, DNP, MSN, MPH, RN, NEA-BC**  
Chief Operating Officer / Chief Nursing Officer



Community supporters toured the new Child and Adolescent Outpatient Mental Health Clinic at a ribbon cutting in June

#### PURCHASES AND IMPROVEMENTS FOR MENTAL HEALTH SERVICES INCLUDING:

- Making the environment of care safer for patients and staff
- A new and expanded Child and Adolescent Mental Health Clinic to improve access to care
- The Living Room, a safe and effective way to support a person in crisis
- Activities, new furnishings and holiday celebrations for inpatients on both the adolescent and adult mental health units



To encourage early childhood literacy, pediatric patients receive new books at annual well visits

“Our vision for mental health is possible due to the overwhelming support of our community. Your endorsement allows Ellis to offer crisis support services in The Living Room and divert patients from non-emergency usage of the ED, expand access to mental health support for children, adolescents and families, and provide a more safe and comforting environment for adult and adolescent inpatients.”



**LIN MURRAY, MSN, RN, CNL**  
Administrative Director  
Mental Health Service Line



The Ellis Pastoral Care Team

“When the Child and Adolescent Mental Health team saw their new space, it reminded me of the excitement you feel as a little kid on Christmas morning. Our providers are excited to have more space in a new bright setting. Most importantly, the teams can’t wait to share the space with their patients. After the last year, it’s remarkable to know community donors support our patients, our work and this project.”



**CHRISTINA MORAN**  
Practice Administrator, Outpatient Child and Adolescent Mental Health



A dedicated space for Play Therapy is part of the new Child and Adolescent Outpatient Mental Health Clinic

# ELLIS IMPACT

UNWAVERING SUPPORT, CARE AND HISTORIC GENEROSITY

# 2020-'21



**MORE THAN  
73,000**

PATIENT VISITS TO THE GOLUB EMERGENCY DEPARTMENT AND ELLIS URGENT AND EMERGENT CARE CENTERS IN 2020

**MORE THAN  
\$8.5**

MILLION WAS DONATED TO ELLIS FROM THE COMMUNITY IN 2020



**MORE THAN  
1,600**

GIFTS WERE RECEIVED FROM 1,115 DONORS IN 2020



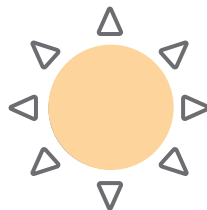
**1,000**

PATIENTS RECEIVED LIFE SAVING CARDIAC SURGERY IN 2020



**MORE THAN  
35,000**

TELEMEDICINE VISITS WERE COMPLETED SINCE MARCH 2020



**MORE THAN  
5,300**

PATIENTS RECEIVED AMBULATORY/DAY SURGERY IN 2020



**MORE THAN  
1,350**

PATIENTS UNDERWENT GENERAL SURGERY IN 2020

**2,000**

INDIVIDUALS HAVE RECEIVED CRISIS DIVERSION CARE AT THE STATE STREET HEALTH CENTER'S LIVING ROOM, SINCE 2018.



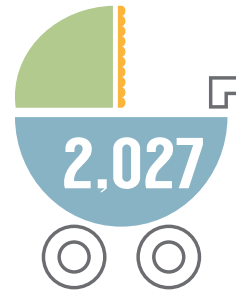
**MORE THAN  
2,500**

ADULTS RECEIVED CARE FOR THEIR MENTAL HEALTH IN 2020



**MORE THAN  
700**

CHILDREN AND ADOLESCENTS RECEIVED MENTAL HEALTH TREATMENT IN 2020



**2,027**

BABIES WERE DELIVERED AT BELLEVUE IN 2020



**306**

PATIENTS RECEIVED BARIATRIC SURGERY IN 2020



**MORE THAN  
10,100**

COVID-19 VACCINES WERE GIVEN TO EMPLOYEES, FIRST RESPONDERS AND OTHER ESSENTIAL WORKERS SINCE DECEMBER 14, 2020

**MORE THAN  
51,000**

COVID-19 SAMPLES WERE COLLECTED FOR TESTING SINCE THE PANDEMIC STARTED



**MORE THAN  
20,000**

COVID-19 SAMPLES WERE TESTED ONSITE IN THE ELLIS LAB

**MORE THAN  
850**

COVID-19 PATIENTS HAVE BEEN DISCHARGED FROM ELLIS SINCE THE PANDEMIC STARTED

## ELLIS INSIGHT

SUMMER 2021 | ellismedicine.org | 8

Planning for  
 the Future...

**SAVE THE  
 DATES:**

**Ellis Medical Oncology—**  
 a member of the Roswell Park  
 Cancer Network grand opening  
**September 2021**  
*Stay Tuned*

**Women's Night Out**  
**October 28, 2021**  
**River's Casino**  
*Stay Tuned for More Details*

**Cardiac Classic**  
**Thanksgiving Day**  
**November 25, 2021**

All COVID-19 precautions and safety measures will take place to ensure the health and wellness of our community. More details will be available as the event dates get closer.

“You have to be a friend to have a friend...” NORMA GORDON



Don and Norma Gordon

Don and Norma Gordon lived in different parts of the country before coming to Schenectady and quickly felt the sense of community that is unique to this area. Don started work for GE and Norma for WRGB. They bought a house in Niskayuna and made it their home for more than 50 years. When not at

work, they appreciated all that the Capital Region had to offer, including the close proximity to the Adirondacks, where they enjoyed many summers with family.

Don and Norma believed that their community was a place of friendship, as Norma often said, “You have to be a friend to have a friend.” Don and Norma were friends to more than their neighbors and co-workers, they were friends to their entire community and to the organizations that provide help when needed. When Don and Norma were thinking about their estate plans, continuing their friendship with the community was a theme that carried through.

After retiring, Norma became a long-time, esteemed Ellis volunteer. She saw

first hand the role Ellis played when her friends were sick or injured, and she saw the compassion that care teams brought to their jobs and patients in the Emergency Department, ICU, Radiology and on the nursing units. It was important to Don and Norma that their legacy continue the friendship they cherished with their community.

Don passed away in 2017, and Norma in 2019. After remembering her family, Norma remembered her friends and the community by leaving a bequest in her will to ensure the next generation would also have a strong hospital to turn to when help is needed.

Norma and Don were cherished friends of Ellis. Their values of caring for the community will carry on because of their generous hearts.

Support from the community is crucial to helping the Ellis team provide lifesaving care. To make a donation, visit [www.ellisfoundation.org](http://www.ellisfoundation.org) — make a onetime gift or sign up to make a monthly gift.

**Staying Connected**

